



Calendar 2018

The ideal introduction to sailing is our Competent Crew program which includes the **Keelboat Start Crewing** and **Start Helming courses** with sets of 3-hour practical lessons conducted on our International J24 yachts. You will get a better feel for sailing and learn to sail much faster than starting on our bigger yachts. After learning to sail on our J24's we then suggest that our bigger yachts are the best next step. Our courses generally take place over five days. Our practical courses are complemented by navigation and other specialist shorebased courses. The theory courses are essential to increase your knowledge and confidence and are the next step to gaining International qualifications recognised by authorities worldwide.

We are located in the Cruising Yacht Club of Australia, Rushcutters Bay, Sydney (home of the famous Rolex Sydney to Hobart Yacht Race). The CYCA is the perfect place to continue your sailing with over 400 yachts, and has been our base for 40 years, on beautiful Sydney Harbour. You can enter our program at any level, provided that you have an adequate level of experience. It is important to be realistic when assessing your experience and abilities. If in doubt you should discuss your requirements with our training centre before booking your course.

Courses	Duration & Type	Go to Page
Sailing Course Calendar Index		P1
Keelboat Theory & Social Evenings	2 hours Theory	P2
Marine Radio LROCP & SRCOP	8 hours	P3
World Sailing Safety and Sea Survival	16 hours theory	P4
RYA Competent Crew	5 days practical	P5
RYA Day Skipper Shore based	Part or full time	P5
RYA Day Skipper	5 days practical	P5
RYA Coastal Skipper Shore based	5 days full time	P6
RYA Yacht master	5 day practical	
International Certificate of Competence ICC	3 hour assessment	
RYA On Line Courses	(option private classroom sessions)	
• Essential Navigation and Seamanship	On Line	P7
• Day Skipper	On Line	P7
• Coastal Skipper	On Line	P7
• Professional Practices and Responsibilities	On Line	P7
• Inland waterways of Europe CEVNI	On Line	P7
RYA Diesel	1 day	P8
RYA Radar	1 day	P8
Marine First Aid	1 day	P8
STCW 10	5 days	P8
Textbooks		P9

Pacific Sailing School Pty Ltd.
 At the:
 Cruising Yacht Club of Australia,
 New Beach Road,
 Rushcutters Bay 2027
 NSW Australia
info@pacificsailingschool.com.au

Phone +61 2 9326 2399
 Within Australia 02 9326 2399
 PO Box 249, Edgecliff 2027
 NSW
 Australia
 ABN 63 002 378 618
www.pacificsailingschool.com.au



Public Holidays 2018: Mon 1 Jan, Fri 26 Jan, Fri 30 Mar, Sat 31 Mar, Sun 1 Apr, Mon 2 Apr, Wed 25 Apr, Mon 11 Jun, Mon 1 Oct, Tue 25 Dec.

Start Crewing Theory & Social Evening

2018 - 30 Jan, 27 Feb, 27 Mar, 29 May, 31 Jul, 28 Aug, 25 Sep, 30 Oct, 27 Nov.

From 6pm to 8pm. After the lesson join us for a meal and social evening in the Yacht Club.

Start Helming Theory & Social Evening

2018 - 6 Feb, 10 Apr, 5 Jun, 7 Aug, 9 Oct, 6 Nov.

From 6pm to 8pm. After the lesson join us for a meal and social evening in the Yacht Club.

Spinnaker, Start Racing, Start Skipper, Theory Social Evening

2018 - 17 Apr, 14 Aug, 4 Sep.

From 6pm to 8pm. After the lesson join us for a meal and social evening in Yacht Club.

Start Sailing Catamarans

2018 - 30 August. 6pm to 8pm.

Join us for a meal and social evening at Multihull Central Marina - Lot 4 Chapman Rd, Annandale

It is our policy to add as much value as we can to our courses by including theory and social evenings, twilight races with our Sailing Programs. In addition, unlimited practice sessions are available on a standby basis for a period. Students are insured during courses and for another 3 months to allow for crewing.



Pacific Sailing School Pty Ltd.
 At the:
 Cruising Yacht Club of Australia,
 New Beach Road,
 Rushcutters Bay 2027
 NSW Australia
info@pacificsailingschool.com.au

Phone +61 2 9326 2399
 Within Australia 02 9326 2399
 PO Box 249, Edgecliff 2027
 NSW
 Australia
 ABN 63 002 378 618
www.pacificsailingschool.com.au



Marine Radio Course (SROCP or LROCP)

Operator qualifications - VHF and MF/HF marine radio equipment and Satellite communications equipment carried on board a vessel must be under the control of a qualified operator at all times. A person operating a VHF marine radio without holding an appropriate qualification or being under the supervision of an appropriately qualified person, may be breaching the Radiocommunications Act. Penalties include significant fines and imprisonment

Long Range Operator Certificate of Proficiency (LROCP) - covers the operation of both VHF and MF/HF equipment. Short Range Operator VHF Certificate of Proficiency (SROCP) - only covers the operation of VHF equipment.

We include a practical session to obtain your Long-Range Marine Radio Certificate of Proficiency LROCP. The SRCOP (VHF only) is held on the same days and is 2 hours less.

Courses Times - 0830 to 1700 on a weekend day

Sunday 25 February	Saturday 6 October
Saturday 7 April	Saturday 17 November
Saturday 5 May	Sunday 16 December
Saturday 14 July	Groups of 3 or more - date to be agreed

SRCOP - VHF/DSC \$320
 LRCOP – VHF/HF/DSC \$370
 Plus \$85 payable to AMC for the Radio Licence.



Pacific Sailing School Pty Ltd.
 At the:
 Cruising Yacht Club of Australia,
 New Beach Road,
 Rushcutters Bay 2027
 NSW Australia
info@pacificsailingschool.com.au

Phone +61 2 9326 2399
 Within Australia 02 9326 2399
 PO Box 249, Edgecliff 2027
 NSW
 Australia
 ABN 63 002 378 618
www.pacificsailingschool.com.au



World Sailing Safety and Sea Survival Course and Update Course

The Update Course is listed in **bold**. Life raft exercises are in the heated pool at UNSW where access and parking is easy. The course includes the live firing of a distress flare, RYA Survival at Sea E-book handbook. Qualification is valid for 5 years.

Update course is usually noon to 9pm and is the date in Bold.

Full course usually 0830 to 1800 over 2 days

February 2018	Saturday 24 February Sunday 25 February	August 2018	Saturday 11 August Sunday 12 August
April 2018	Saturday 28 April Sunday 29 April	October 2018	Sunday 14 October Sunday 21 October
May 2018	Saturday 12 May Saturday 19 May	November 2018	Sunday 18 November Sunday 25 November
June 2018	Saturday 02 June Sunday 03 June	December 2018	Sunday 2 & Sunday 9 December
July	On request – minimum group of 6 persons	December 2018	Saturday 15 & Sunday 16 December



SSSC Full Course - \$640
SSSC Update Course \$520

Private Courses are available on demand for 6 or more

Pacific Sailing School Pty Ltd.
At the:
Cruising Yacht Club of Australia,
New Beach Road,
Rushcutters Bay 2027
NSW Australia
info@pacificsailingschool.com.au

Phone +61 2 9326 2399
Within Australia 02 9326 2399
PO Box 249, Edgecliff 2027
NSW
Australia
ABN 63 002 378 618
www.pacificsailingschool.com.au



RYA Courses	Day Skipper Theory On Line + private sessions 5 days shore based	Practical - 5 days RYA Competent Crew RYA Day Skipper
January 2018	Friday 12 January to Tuesday 16 January	Wednesday 17 January to Sunday 21 January
February 2018		Wednesday 28 February To Sunday 4 March
March 2018		Thursday 29 March to Monday 02 April
April 2018	Friday 6 April to Tuesday 10 April	Wednesday 11 April to Sunday 15 April
May 2018		Thursday 24 May To Monday 28 May
June 2018		Thursday 21 June to Monday 25 June
July 2018	Friday 13 July to Tuesday 17 July	Thursday 19 July To Monday 23 July
August 2018		Wednesday 22 August To Sunday 26 August
September 2018 Catamaran		Saturday 22 September To Wednesday 26 September
September 2018		Thursday 20 September To Monday 24 September
October 2018 Catamaran		Sunday 28 October To Thursday 1 st November
October 2018	Friday 5 October to Tuesday 9 October	Thursday 25 October To Monday 29 October
November 2018		Thursday 22 November To Monday 26 November
December 2018		Thursday 13 December To Monday 17 December
Course fee	\$695 - On line only \$1290 5-day full time classroom \$390 3-hour private classroom if required	\$1670
Included Course Kit	<ul style="list-style-type: none"> ✓ 2B pencils, sharpener, ✓ Day Skipper Student pack ✓ Navigation book, Exercises and information ✓ Training Chart 5 and 6, DSC Certificate 	Provisions on board
Not Included Total \$215 E books are available	<ul style="list-style-type: none"> x Navigation Handbook - \$48 x Weather Handbook - S/Hemisphere \$42 x Training Almanac - S/Hemisphere \$20 x Collision regulations - \$26 x Plotter & Divider \$59 x Courier \$20 	Meals ashore

Pacific Sailing School Pty Ltd.
At the:
Cruising Yacht Club of Australia,
New Beach Road,
Rushcutters Bay 2027
NSW Australia
info@pacificsailingschool.com.au

Phone +61 2 9326 2399
Within Australia 02 9326 2399
PO Box 249, Edgecliff 2027
NSW
Australia
ABN 63 002 378 618
www.pacificsailingschool.com.au



RYA Courses	RYA Coastal Skipper/Yachtmaster	Practical - 5 Days
		Coastal Skipper Yachtmaster Prep
January 2018		Wednesday 17 January to Sunday 21 January
February 2018		Wednesday 28 February To Sunday 4 March
March 2018		Thursday 29 March to Monday 02 April
April 2018		Wednesday 11 April to Sunday 15 April
May 2018		Thursday 24 May To Monday 28 May
June 2018		Thursday 21 June to Monday 25 June
July 2018		Thursday 19 July To Monday 23 July
August 2018		Thursday 23 August To Monday 27 August
September 2018		Thursday 20 September To Monday 24 September
October 2018		Thursday 25 October To Monday 29 October
October 2018 Catamaran		Sunday 28 October To Thursday 1 st November
November 2018		Thursday 22 November To Monday 26 November
December 2018		Thursday 13 December To Monday 17 December
Course fee Options		\$695 On line only \$390 Per 3 x hour private classroom \$1290 5 day classroom with group of 4 or more

Pacific Sailing School Pty Ltd.
At the:
Cruising Yacht Club of Australia,
New Beach Road,
Rushcutters Bay 2027
NSW Australia
info@pacificsailingschool.com.au

Phone +61 2 9326 2399
Within Australia 02 9326 2399
PO Box 249, Edgecliff 2027
NSW
Australia
ABN 63 002 378 618
www.pacificsailingschool.com.au



Available 'On Line'

1. RYA Essential Navigation and Seamanship ENS
2. RYA Day Skipper DSC
3. RYA Coastal Skipper /Yacht Master CSC
4. RYA Ocean Yacht Master OYM
5. ICC CEVNI Inland Waterways Europe
6. RYA Professional Practices and Responsibilities PPR

The RYA Essential Navigation and Seamanship theory course is aimed at anyone new to sailing, motor boating, sea fishing, sea kayaking and diving as well as experienced dinghy and keelboat sailors and inshore racers. Ideal for anyone contemplating a bareboat charter holiday or considering buying their own boat.

On successful completion of the ENS and the Keelboat Start Helming course you qualify to apply to the NSW Maritime Authority (RMS) for your Power Boat Driver's License: -

Take the following to RMS

- ✓ The RYA Essential Navigation and Seamanship certificate
- ✓ The Recreational Powerboat Certificate or Keelboat Start Helming Certificate
- ✓ ID Primary – Australian Driver's License or Passport
- ✓ ID Secondary – Medicare card or Visa
- ✓ ID Third – Rate Notice or Utility document

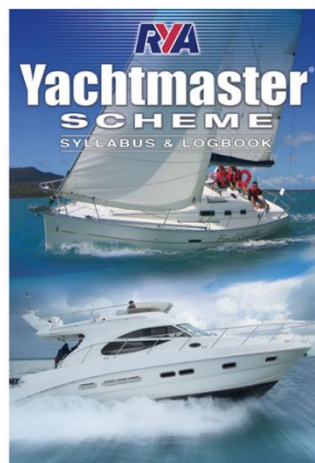
On Line Course Fees

ENS \$355, *DSC \$695, *CSC \$695, *OYM \$695, ICC CEVNI \$95.

Option 3 hour *private classroom session \$390

Each RYA ENS course Includes

- ✓ RYA Student Pack
- ✓ RYA handbook
- ✓ The Almanac
- ✓ Exercises and information
- ✓ Training Charts,
- ✓ Certificate
- ✓ E Electronic Chart Plotter
- ✓ 2b pencil, rubber & sharpener
- ✓ Express post to you overnight



Pacific Sailing School Pty Ltd.
At the:
Cruising Yacht Club of Australia,
New Beach Road,
Rushcutters Bay 2027
NSW Australia
info@pacificsailingschool.com.au

Phone +61 2 9326 2399
Within Australia 02 9326 2399
PO Box 249, Edgecliff 2027
NSW
Australia
ABN 63 002 378 618
www.pacificsailingschool.com.au



Short Courses

RYA Diesel \$350 - 1 - day Course

This course was developed by the RYA for those who know very little about mechanics. The aim is to prevent machinery breakdown at sea and to give you the confidence and knowledge to get going again. Volunteer marine rescue groups tell us that the main reason they are called out to sailing vessels is simple mechanical failure. As a crew member on a sailing or power - driven vessel, this training will extend your maritime skills and enhance your value as a member of the crew.

RYA Radar \$350 - 1 - day Course

Radar is the most versatile of all electronic navigation aids. It can, however, easily mislead those who do not know how to adjust its controls, allow for its limitations or interpret its picture. The course content was developed by the Royal Yachting Association to meet the needs of small boat operators, both power and sail. Delivered by qualified radar operators who are experienced deck officers holding internationally recognized maritime qualifications, you will gain "hands on" training in small groups limited to six persons. You will gain the confidence to navigate by radar in conditions of restricted visibility and the knowledge to interpret what you are seeing on your radar screen.

Marine First Aid MFA \$350 - 1 - day Course

Most yachtsmen and women undertake basic first aid training as a precaution against the inevitable accidents at sea, but in this training, we are only taught how to stabilize a patient until the ambulance arrives. This is usually 11 minutes in a capital city in Australia. At sea off the Queensland coast, as an example, using established Australian search and rescue services, the minimum response time for on/site medivac is three hours. This training is mandatory for racing yachtsmen and highly recommended for all who venture offshore under power or sail.

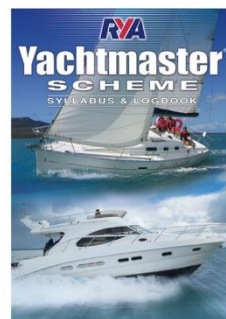
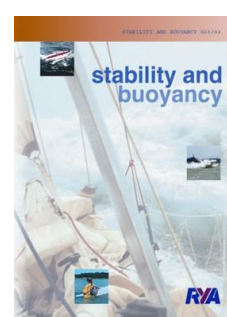
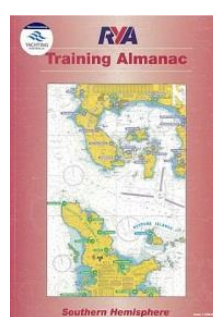
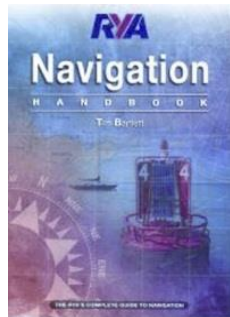
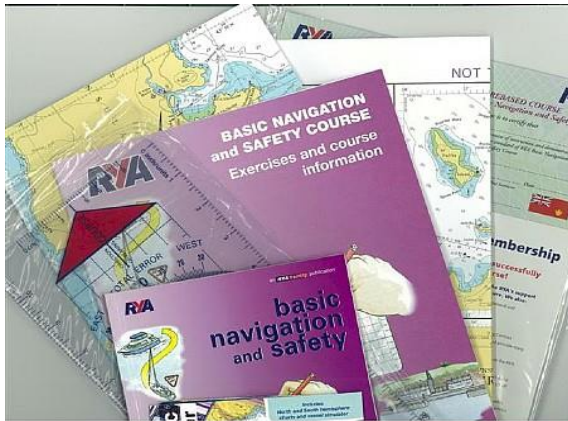
STCW10 includes MFA \$1990 – 5 - day Course:

This training prepares crew for work in **the international maritime industry** and STCW stands for Standards of Training and Certification for Watch keepers (2010). This program provides basic sea safety training for all ship's crew on foreign going vessels and is accredited by the International Maritime Organization thru an accredited IMO national maritime authority. This course is specifically tailored to crew seeking employment in the global super yacht industry, but is accredited for all basic maritime occupations. All participants will receive RYA and RYA/MCA sea safety certification enabling them to also work on large sailing vessels and participate in the sport of yacht racing globally.

Note: The short courses above are provided by Maritime Training.

Pacific Sailing School Pty Ltd.
At the:
Cruising Yacht Club of Australia,
New Beach Road,
Rushcutters Bay 2027
NSW Australia
info@pacificsailingschool.com.au

Phone +61 2 9326 2399
Within Australia 02 9326 2399
PO Box 249, Edgecliff 2027
NSW
Australia
ABN 63 002 378 618
www.pacificsailingschool.com.au



Pacific Sailing School Pty Ltd.
 At the:
 Cruising Yacht Club of Australia,
 New Beach Road,
 Rushcutters Bay 2027
 NSW Australia
info@pacificsailingschool.com.au

Phone +61 2 9326 2399
 Within Australia 02 9326 2399
 PO Box 249, Edgecliff 2027
 NSW
 Australia
 ABN 63 002 378 618
www.pacificsailingschool.com.au