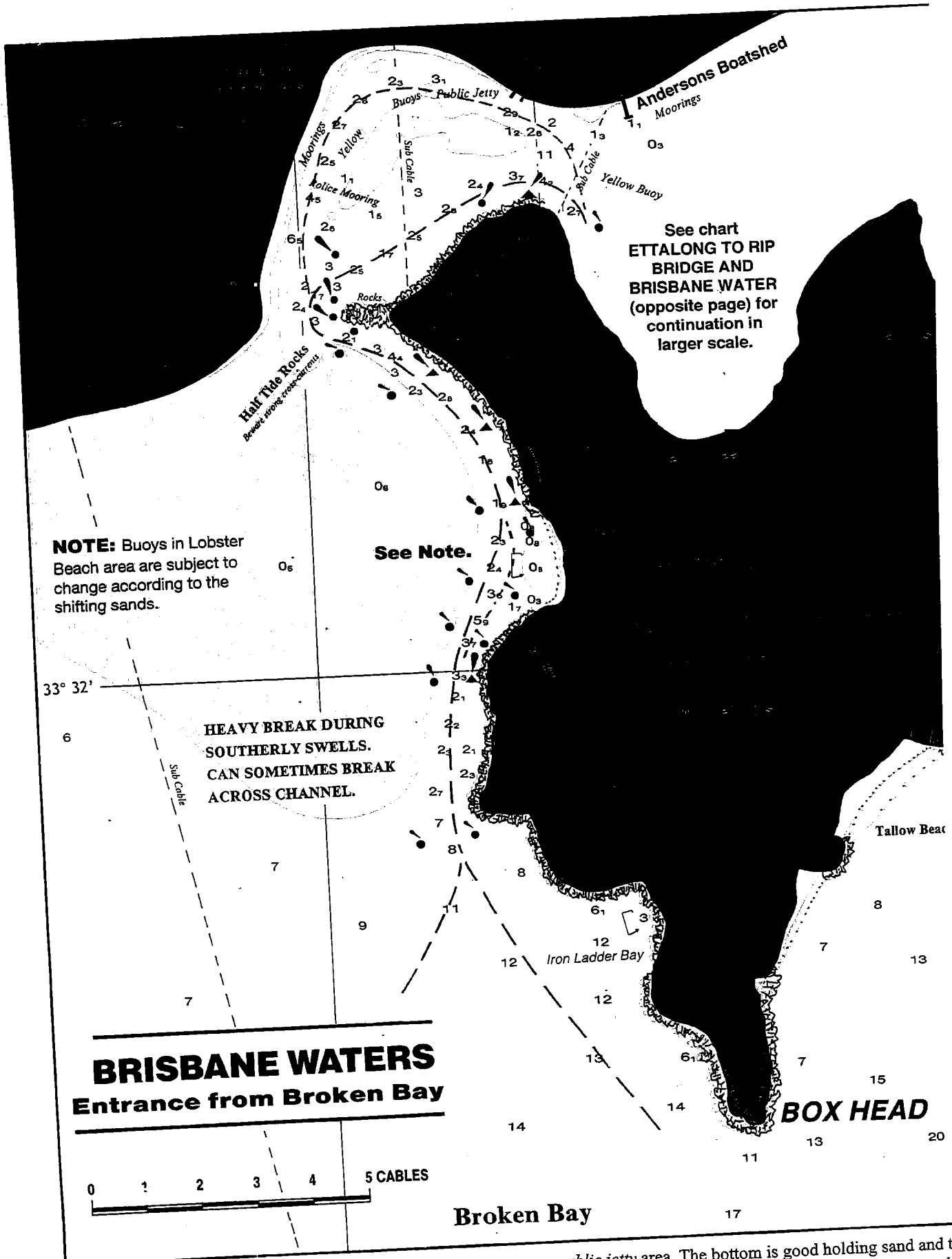


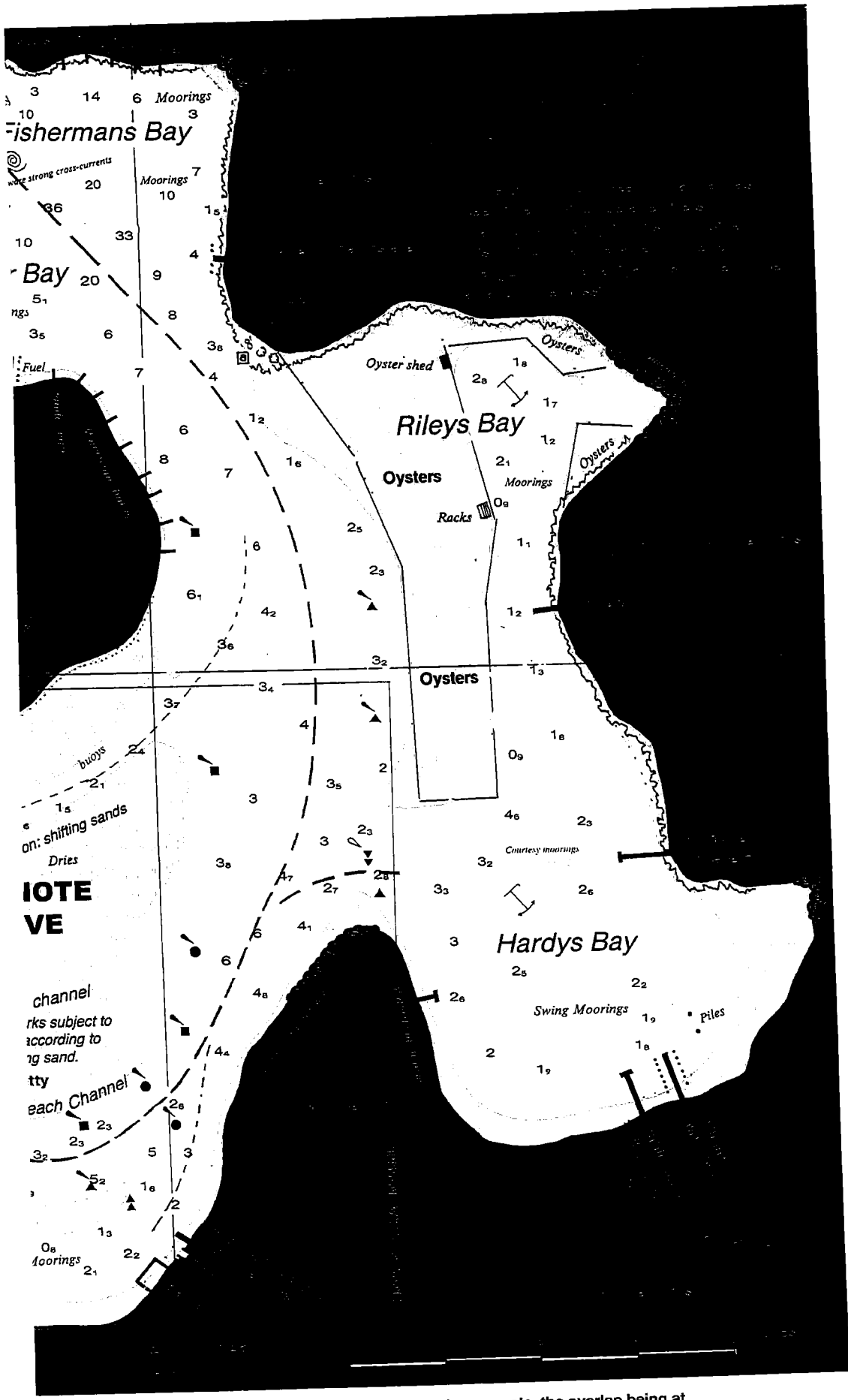
**BRISBANE WATER**  
**Broken Bay to Gosford**



**BRISBANE WATERS**  
Entrance from Broken Bay

**ETTALONG BEACH.** A daily commuter ferry runs between Ettalong and Pittwater using the western channel from Half Tide Rocks to Ettalong. Nevertheless, anchorage remains possible in this channel but do not obstruct it or the

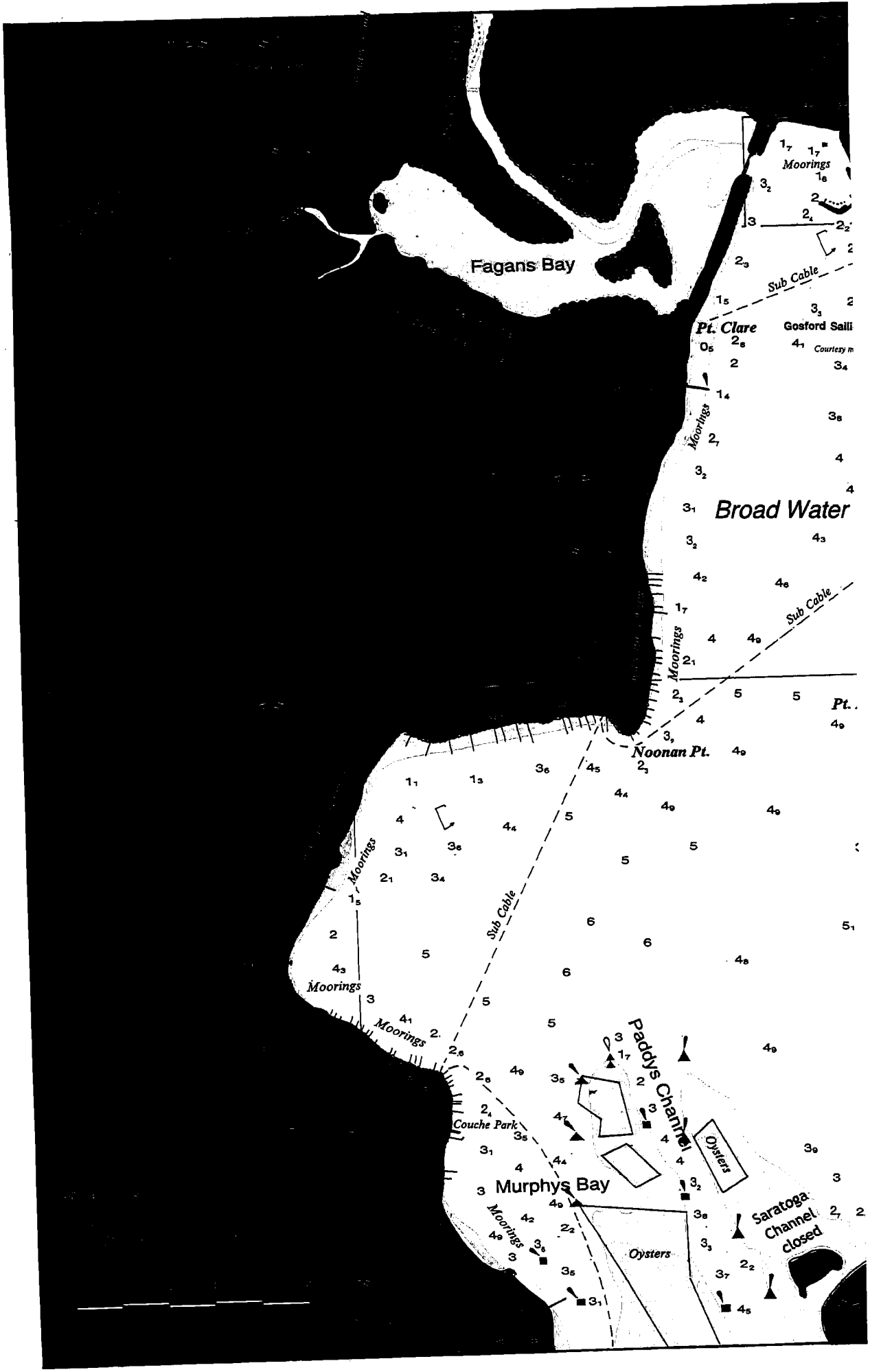
public jetty area. The bottom is good holding sand and the shopping centre is handy. It can be entered via the south end after rounding Half Tide Rocks or from the northern end. During developed swell, it can become uncomfortable

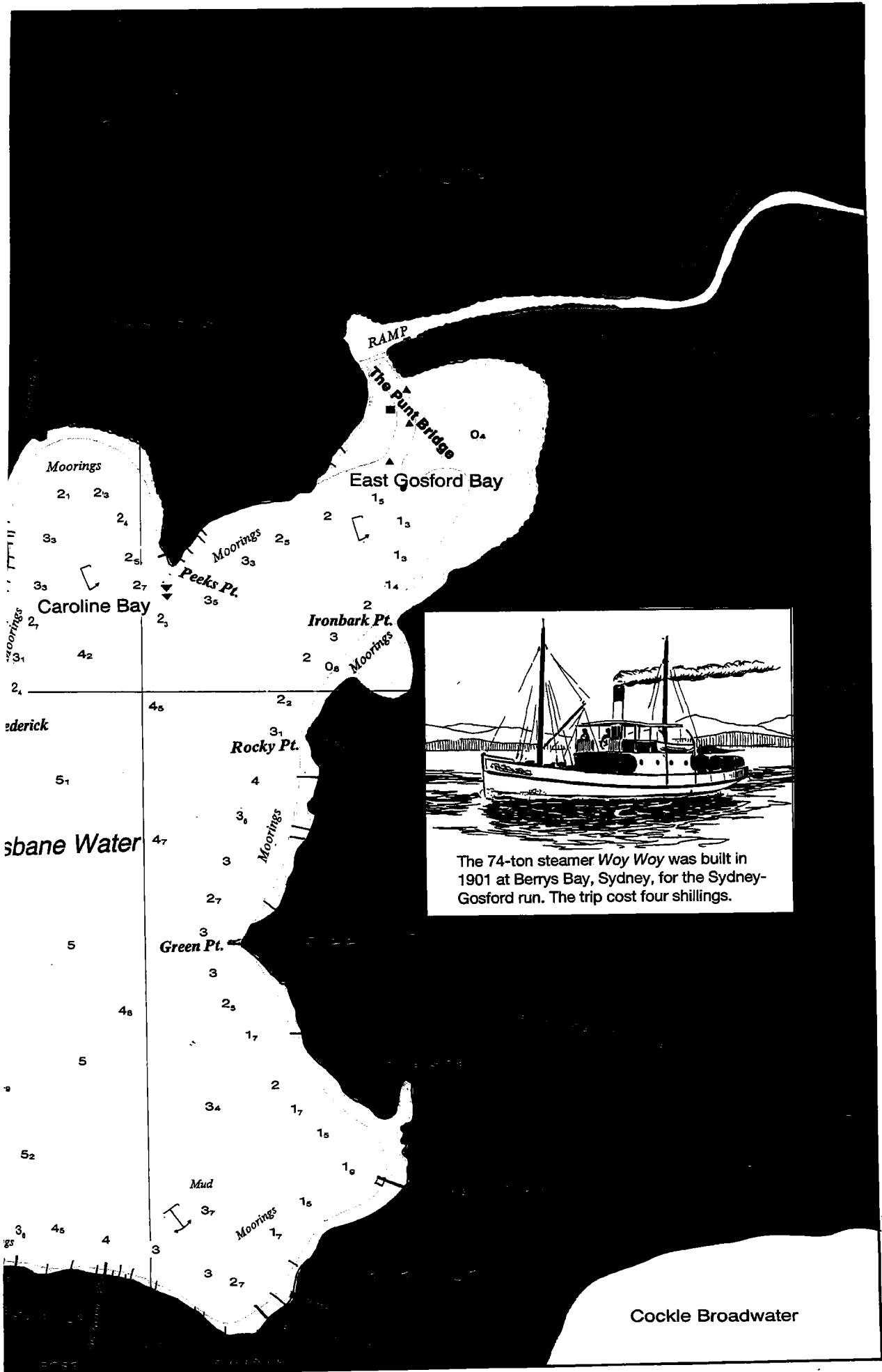


**NOTE**  
**VE**

channel  
rks subject to  
according to  
g sand.  
tty  
each Channel

bove chart above continues from the opposite page at a larger scale, the overlap being at  
g Gourong Point, southwest of Andersons Boatshed. Persons unfamiliar with the area are  
advised to enter the Lobster Beach area no earlier than three hours after low tide.





The 74-ton steamer *Woy Woy* was built in 1901 at Berrys Bay, Sydney, for the Sydney-Gosford run. The trip cost four shillings.